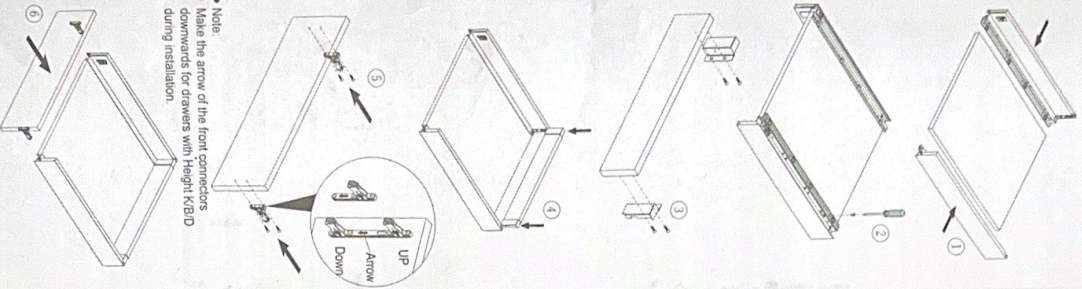


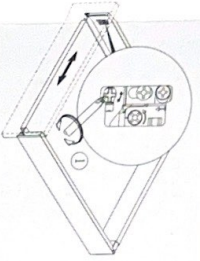
Installation Instruction for Minibox Drawers

Drawer Installation

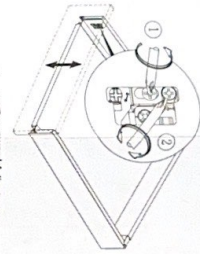


• Note
Make the arrow of the front connectors downwards for drawers with Height KB/D

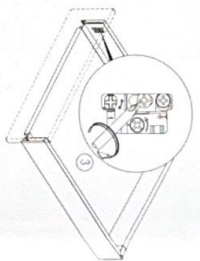
Adjustment



• ±1.5 mm Rightward/Leftward Adjustments
• Use the corresponding adjustment screws during operation

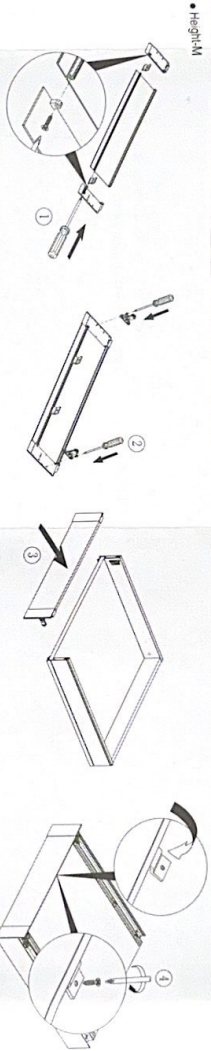


• ±2 mm Upward/Downward Adjustments
• Unlock the screws before the operation



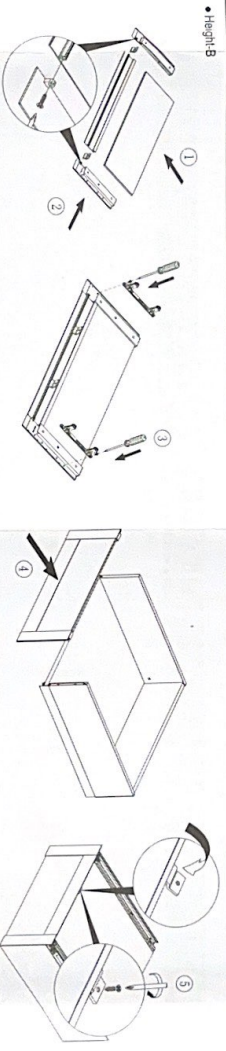
• Lock
• Lock the screws after adjustments

Installation of the Internal Front Panel for Low Inner Drawers



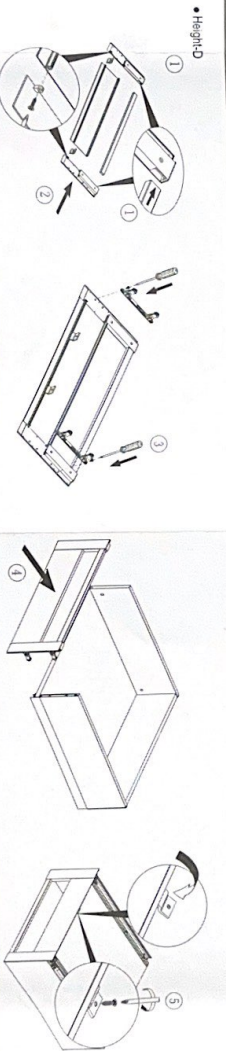
• Height M

Installation of the Internal Front Panel with Heightening Panel for High Inner Drawers



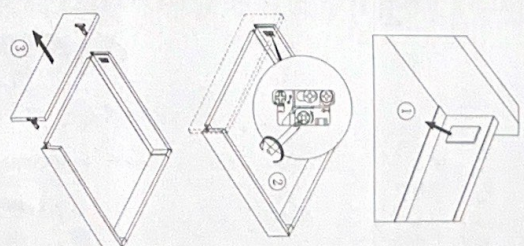
• Height B

Installation of the Internal Front Panel with Bars for High Inner Drawers

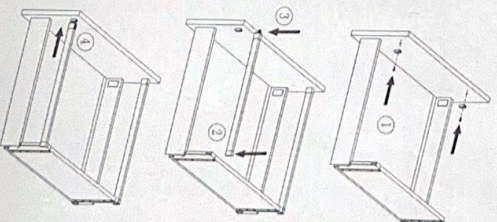


• Height D

Disassembly of Panels

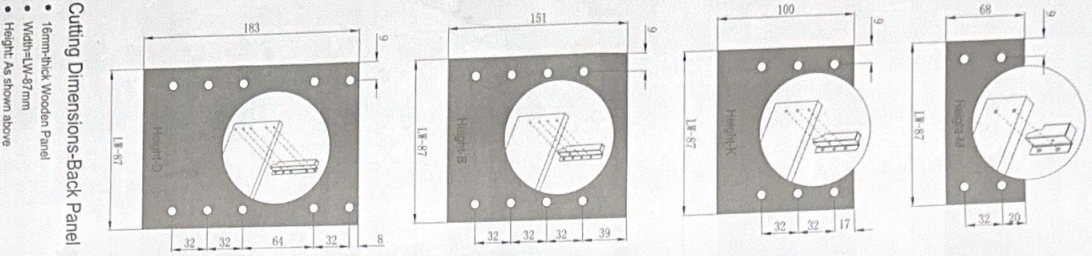


Installation of Square Bars



Installation Instruction for Minibox Drawers

Installation Dimensions-Back Panel

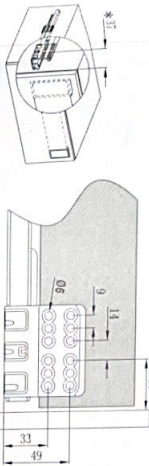
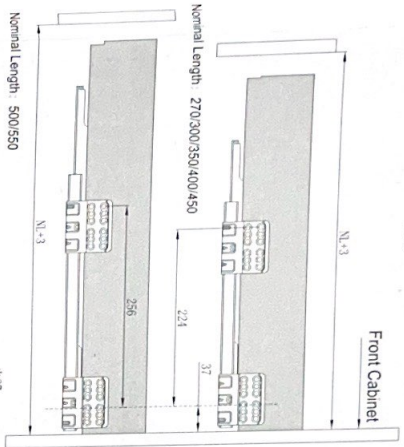


Cutting Dimensions-Back Panel

- 16mm-thick Wooden Panel
- Width-LW-87mm
- Height-As shown above

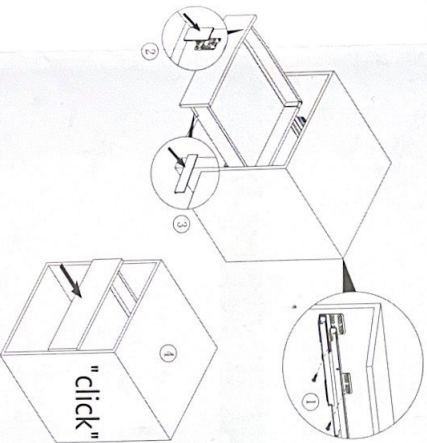
Installation Dimensions-Drawer Runners

- 04 Self-tapping Screws Recommended

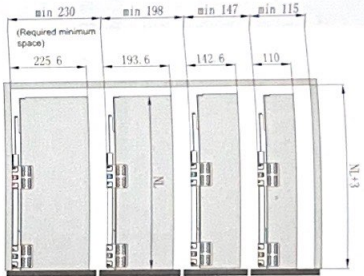


* Installation Dimension of Inner Drawer Runners

Drawer Installation



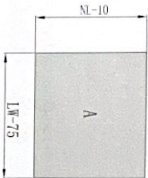
Cabinet Space Requirement



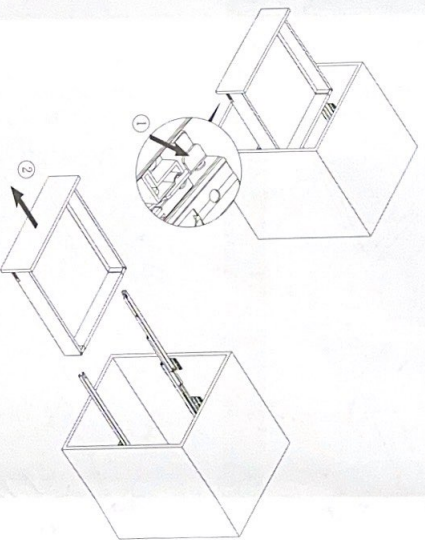
- Inner Drawers require the same minimum space like other drawers

Cutting Dimensions Bottom Panel

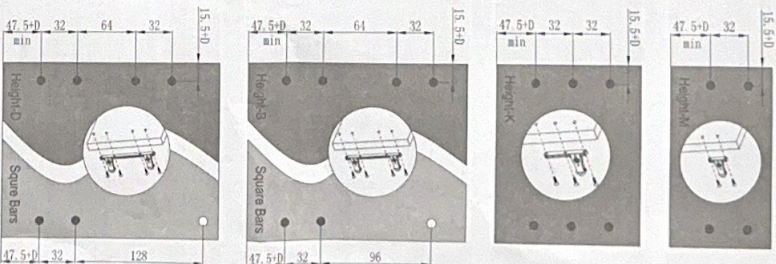
- 16mm-thick Wooden Panel
- Width-LW-75mm
- Length-NL-10mm



Drawer Disassembly



Hole Dimensions



- For front connectors
- For square bars

Cutting Dimensions for Assessories

